

# ***EUREF activities at the ASI/CGS analysis center***

**C.Ferraro (1), A.Nardi (1), C.Sciarretta (1), F.Vespe (2)**

(1) Telespazio S.p.A. - CGS Centro di Geodesia Spaziale - Matera - ITALY

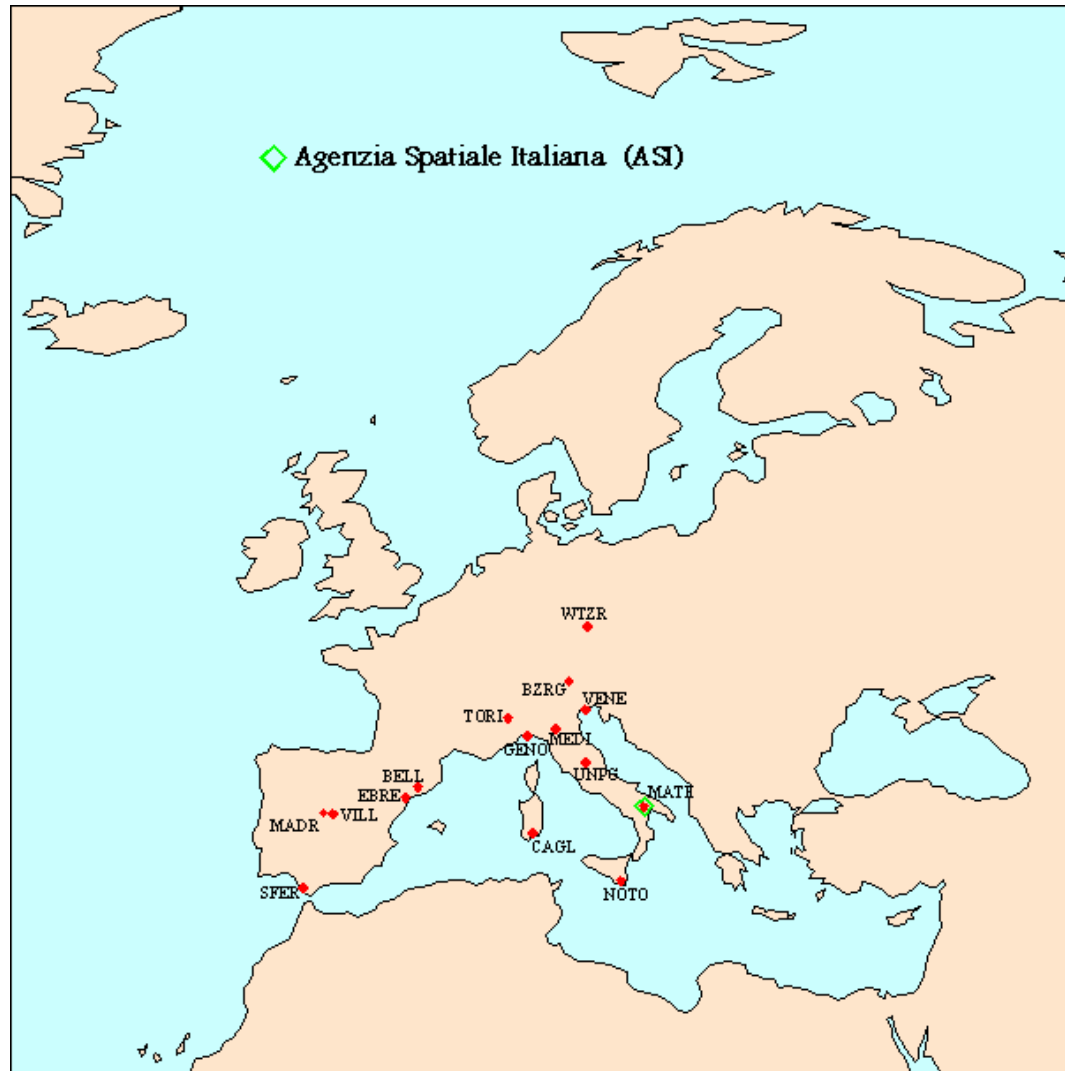
(2) ASI Agenzia Spaziale Italiana – CGS Centro di Geodesia Spaziale - Matera - ITALY

***EUREF Local Analysis Centers Workshop  
Paris, 09-10 September, 1999***

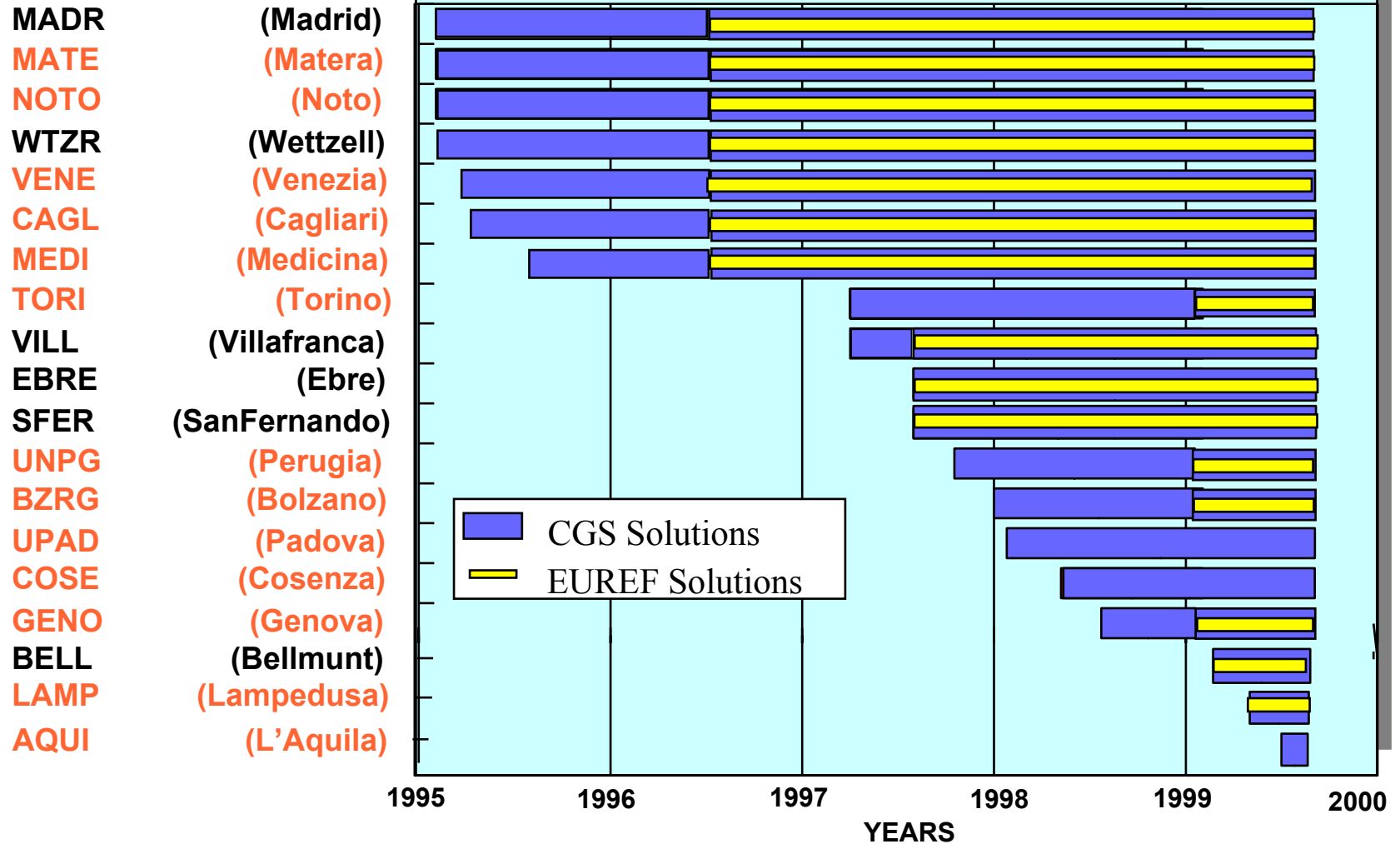
## ASI/CGS EUREF subnetwork : 1996/97



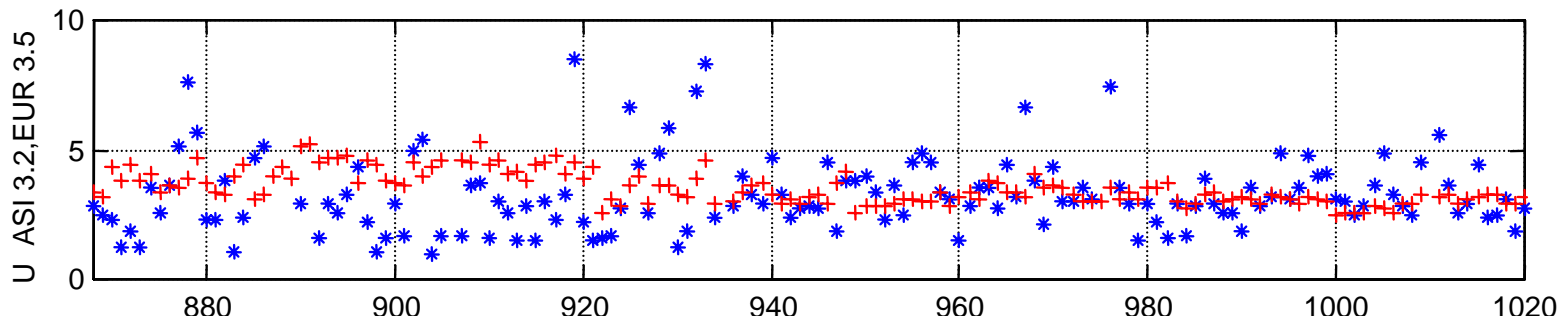
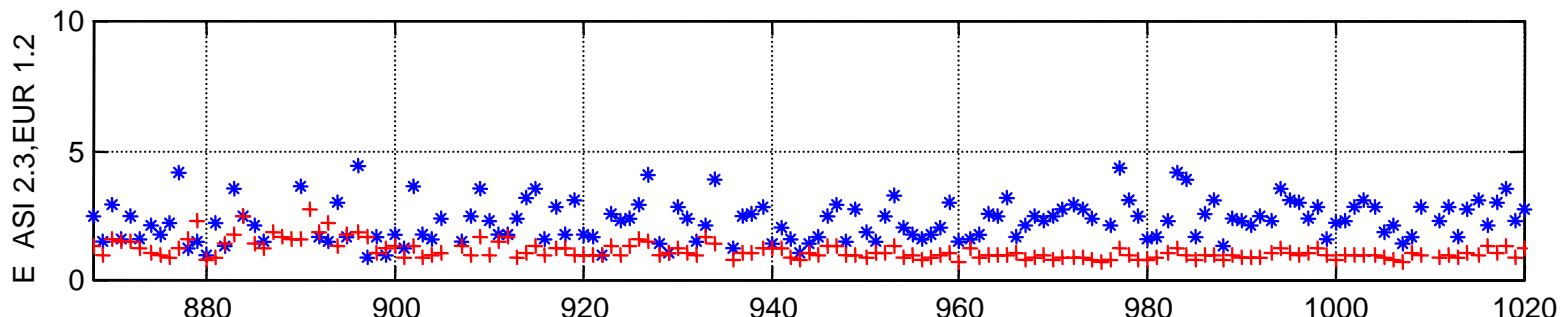
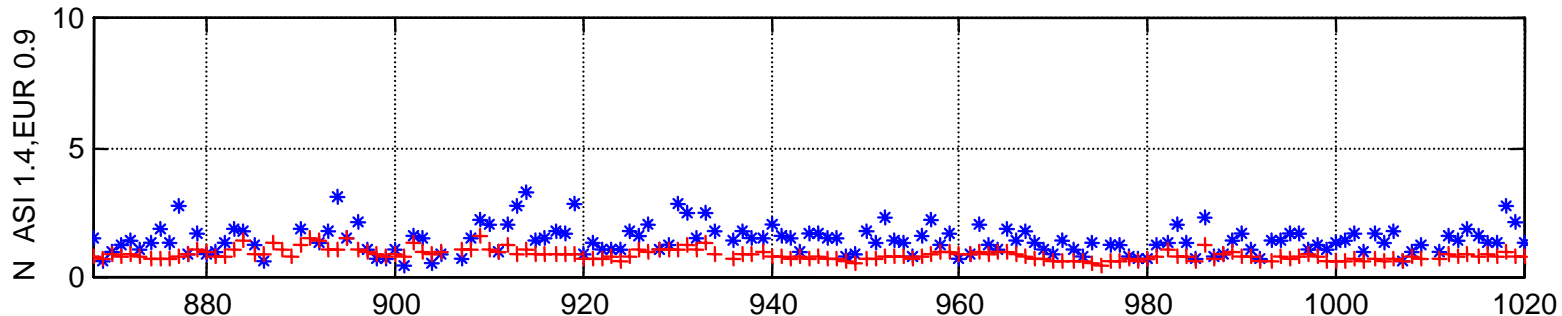
## ASI/CGS EUREF subnetwork : 1999



# TIME INTERVALS FOR THE WHOLE NETWORK PROCESSED AT CGS



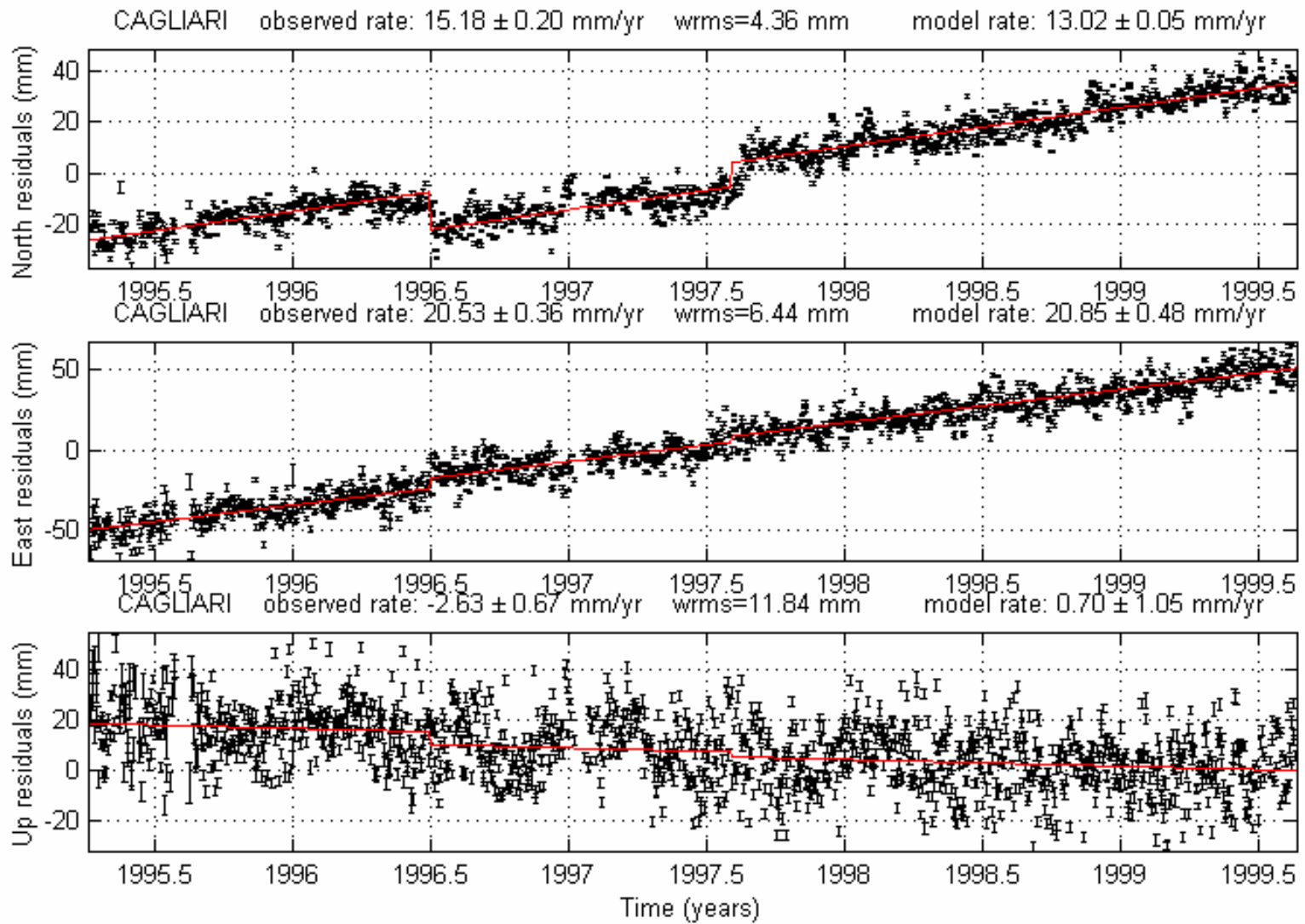
RMS from EUREF reports (mm) \*: ASI +: EUR

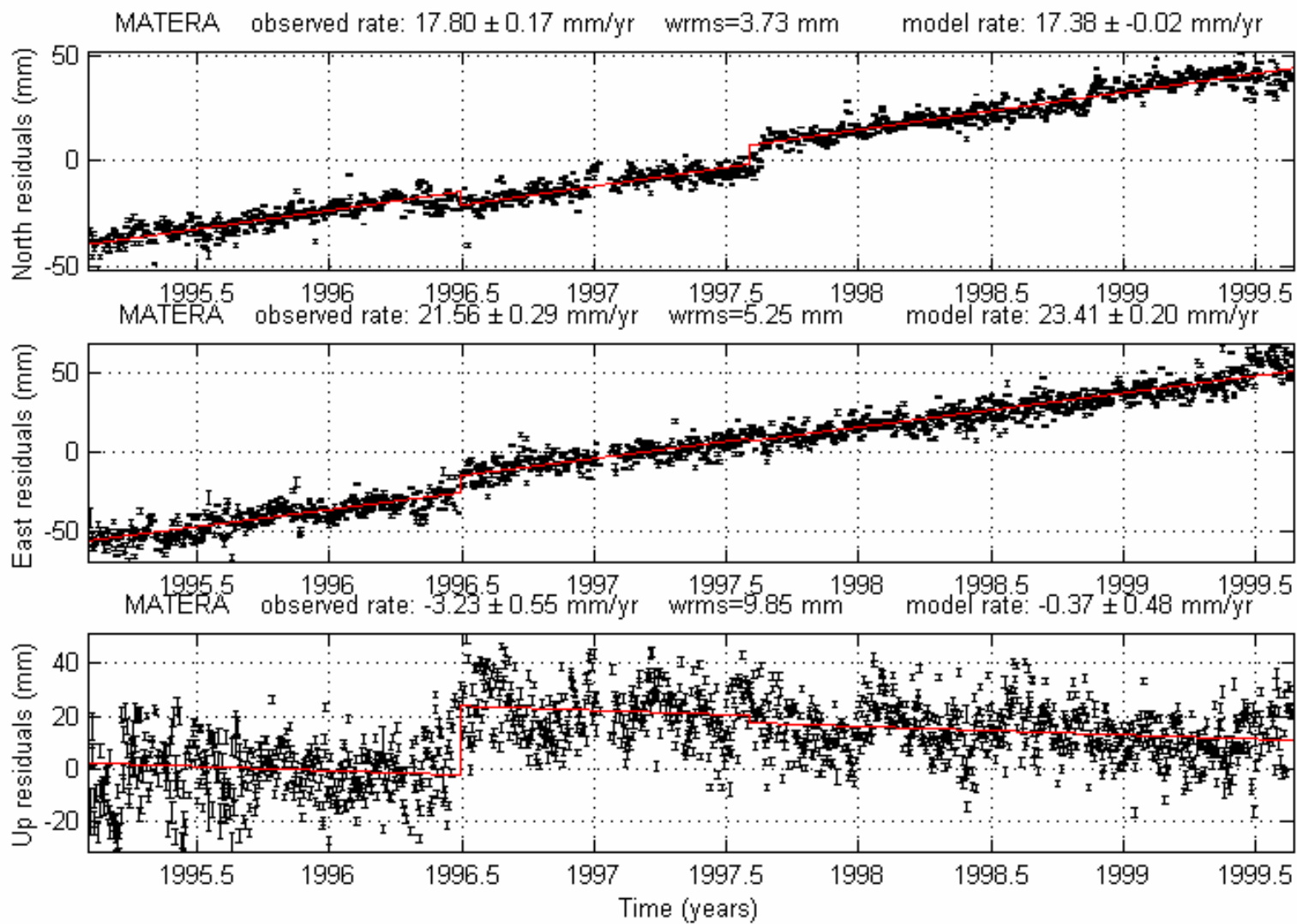


week number

ASI/CGS estimated velocities (mm/yr) and ITRF97

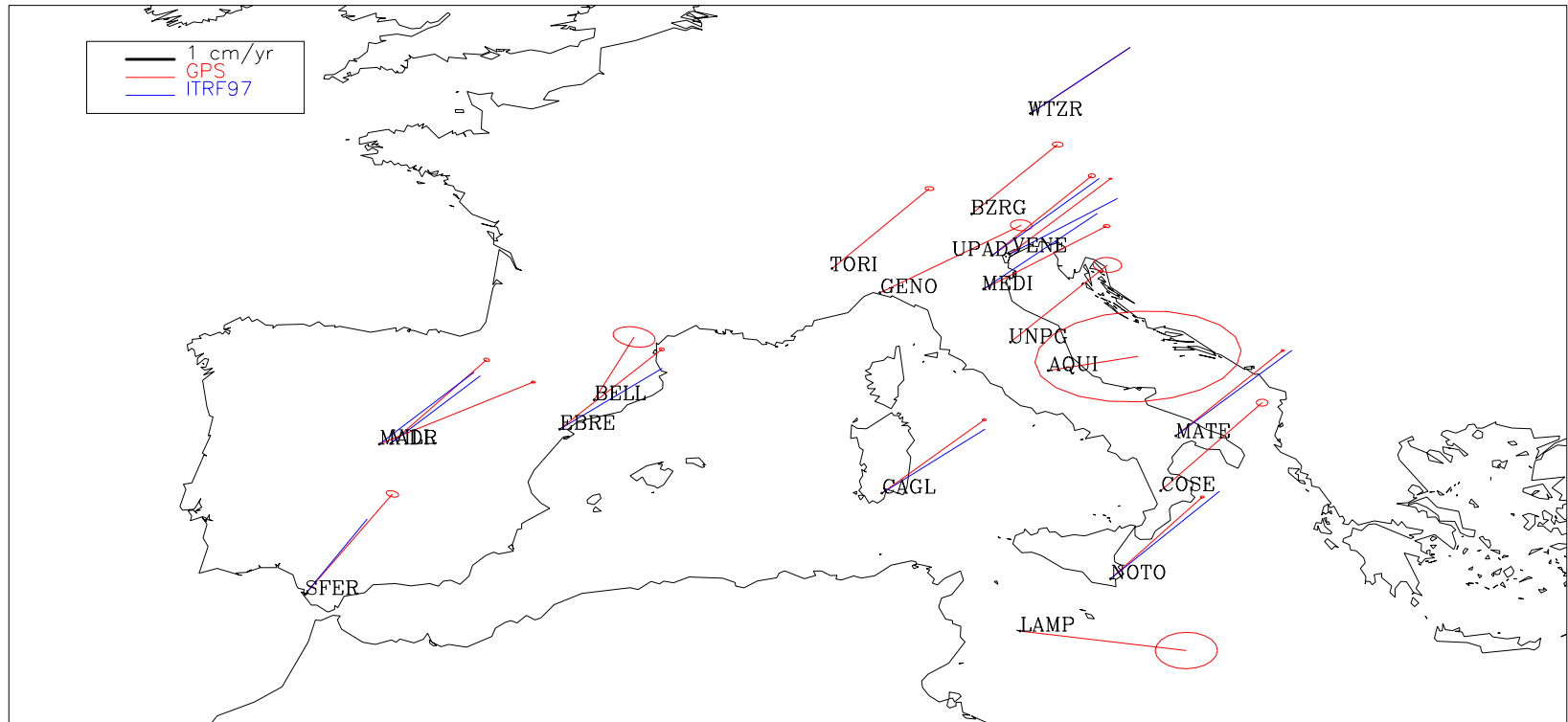
Stat	Comp	ASI/CGS	ITRF97
CAGL	N	15.2 +-0.2	13.0+-0.05
	E	20.5 +-0.4	20.8+-0.5
	U	-2.6 +-0.7	0.7+-1.0
EBRE	N	16.7+-0.3	12.9+-0.1
	E	21.3+-0.5	20.8+-1.0
	U	-0.8+-0.9	1.4+-1.4
MATE	N	17.8+-0.2	17.4+-0.02
	E	21.6+-0.3	23.4+-0.2
	U	-3.2+-0.5	-0.4+-0.5
MEDI	N	13.4+-0.3	15.4+-0.03
	E	25.1+-0.6	23.0+-0.2
	U	-2.3+-1.2	-4.0+-0.6
NOTO	N	17.4+-0.2	17.8+-0.06
	E	18.5+-0.4	22.0+-0.2
	U	-4.7+-0.7	-0.3+-0.7
SFER	N	20.4+-0.7	15.3+-0.4
	E	18.0+-1.2	12.5+-2.5
	U	-5.0+-2.3	-1.9+-6.2
VILL	N	17.5+-0.3	13.8+-0.03
	E	20.4+-0.5	18.2+-0.5
	U	-0.6+-1.0	0.7 +-0.9







# ASI/CGS GPS estimated absolute velocities and ITRF97



## Final Remarks

- ASI/CGS contribution to EUREF started in 1996 delivering weekly solutions of seven stations
- At present, ASI/CGS weekly solution for EUREF contains sixteen stations: most of the additional stations are in Italy (Torino, Bolzano, Perugia, Genova, Lampedusa)
- During the last years, ASI has been strongly encouraging installation of GPS permanent stations in Italy, giving support to national institutions interesting in such activity
- New permanent sites in Italy have been installed in order to match the new applications that is possible to fulfil with GPS (such as atmospheric investigations for meteorological application)